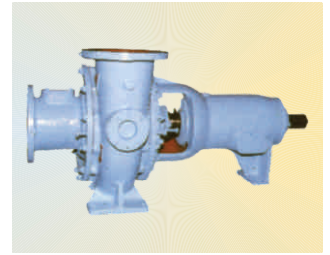
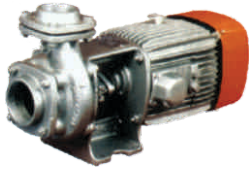


# PUMPS & VALVES





**End Suction Monoblock Pump**  
SERIES : GMCT/KDS+ /KDT + /KS +

**RANGE**

Delivery Size : up to 150 mm  
Capacity : up to 260 m<sup>3</sup>/hr  
Head : up to 102 meters  
Power rating : 0.37 kW to 22 kW

**FEATURES**

- Gland packed or Mechanical seal
- Suitable for wide voltage fluctuation
- Supplied with bronze impellers as optional
- Top flat efficiency curve to enhance minimum variation in efficiency in entire operating range.

**APPLICATIONS**

- Irrigation
- Agriculture
- Water supply
- Utility
- Cooling Tower
- Industrial Uses etc.



**Open well Submersible Pump**  
SERIES : KOS+

Delivery Size : upto 100 mm  
Head : up to 64 meters  
Discharge : up to 115m<sup>3</sup>/hr  
Power rating : 0.37kW - 11 kW

- Submerged in the water.
- Flatter efficiency curve for efficient operation.
- Voltage range 200 - 440v
- Can also be used for out of water applications
- Replaceable wearing parts and hence longer life.

- Irrigation - conventional & sprinkles
- Gardening
- Fountains
- Wells
- Sumps and water tanks etc.



**End Suction Pump**  
SERIES : KH / KHDT+

Delivery Size : up to 65 mm  
Capacity : up to 68 m<sup>3</sup>/hr  
Head : up to 104 metres  
Power rating : 0.25 kW to 15 kW

- Suitable for belt drive
- Electric motor / Engine drive
- Suction lift upto 7.5 mtrs.
- Single / Two Stage end suction design

- Irrigation
- Water supply
- Agriculture
- Utility
- cooling tower



**Self Priming Pump**  
SERIES : SP/SPM

Delivery Size : up to 150 mm  
Capacity : up to 275 m<sup>3</sup>/hr  
Head : up to 34 metres  
Power Rating : 0.75 kW to 19.5 kW

- Back pull-out design
- Self - priming
- Available in monoblock version also
- Non - Clogging impeller to handle suspended solids
- Suitable for coupling with motor or engine

- Sewage / Muddy water
- Rain and Storm Water
- Petroleum Products
- Liquids with Solids in suspension
- Light Slurries



**Vacuum Pump**  
SERIES : KV / DV

**RANGE**

Vacuum : up to 650 mm of Mercury  
Air flow rate : up to 162 m<sup>3</sup>/hr  
Power rating : 0.75 kW to 7.5 kW

**FEATURES**

- 1 to 2 HP in mono block Design
- Sturdy casing, provided with foot, suction and delivery nozzles
- Grease lubricated deep groove ball bearings
- Easy maintenance and spares availability

**APPLICATIONS**

- Drying & Evaporation
- Distillation & Filtration
- Sterilisation
- Evacuation of air from suction pipes and chambers
- Priming of large pumps



**Submersible Pump**  
SERIES : Champion

Suitable for  
Borewell dia : 100 mm / 150 mm  
Capacity : up to 72 m<sup>3</sup>/hr  
Head : upto 249 metres  
Power rating : 0.37 kW to 15 kW

- Light Weight and compact
- Multistage
- High speed
- Radial flow / Mixed flow
- Low power consumption per stage
- Can be installed Horizontally also

- Agriculture
- Irrigation - Conventional and Sprinkler
- Booster application
- Water Supply schemes for industries
- Construction



**Vertical in Line Multistage Pump**  
SERIES : IL

Delivery Size : up to 100 mm  
Capacity : up to 75 m<sup>3</sup>/hr  
Head : up to 220 metres  
Temperature : (-) 15°C to 120 °C

- Pressed stainless steel components
- High efficiencies
- Low NPSH
- All wetted parts in SS304 or SS316
- Mechanical Seal
- 50Hz / 60 Hz availability

- Booster
- Fire Fighting,
- HVAC • Boiler Feed
- Condensate / DM Water
- Water Purification
- RO Systems
- Drip and sprinkler irrigation



**End Suction Pump**  
SERIES : CPHM

Delivery Size : up to 200 mm  
Capacity : up to 750 m<sup>3</sup>/hr  
Head : up to 150 metres  
Temperature : (-) 30°C to 90°C

- Back pull-out design
- Conforming to DIN 24256 / ISO 2858
- Gland packed / Mechanical seal
- 50 HZ/60HZ availability

- Booster service
- Fire fighting
- Air-conditioning



**End Suction Pump**  
SERIES : DB / DB (Large)

Delivery Size : up to 300 mm  
Capacity : up to 1900 m<sup>3</sup>/hr  
Head : up to 100 mtrs.  
Temperature : (-) 10°C to 100°C

- Back pull - out design
- Conforming to DIN 24255
- End Suction
- Gland packed / Mechanical seal
- 3500 to 1500 rpm
- Available in various material combinations

- Air conditioning
- Fire Fighting
- Booster service
- Water
- Brine, Oils etc.



**End Suction Pump**  
SERIES : CE

Delivery Size : upto 125 mm  
Capacity : up to 660 m<sup>3</sup> / hr  
Head : up to 100 meters  
Temperature : (-) 10°C to 140°C

- Back Pullout Design
- Confirming to DIN 24256 and ISO 2858
- Single stage with back pull - out type design.
- Suitable for 3500 / 1500 rpm
- Gland packed / Mechanical Seal

- Air conditioning
- Fire Fighting
- Condensate water supply
- Booster Services
- Handling clear and turbid water up to 3000 ppm

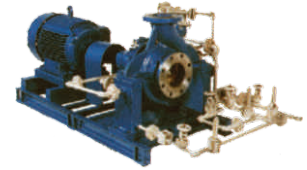


**End Suction Mixed Flow Pump**  
SERIES : MF

Delivery Size : upto 650 mm  
Capacity : upto 7000 m<sup>3</sup>/hr  
Head : up to 30 meters  
Temperature : 5°C to 140°C

- Low Head high capacity pumps
- Gland packed / Mechanical Seal
- Non Clog – Semi open or enclosed type impellers
- Option available in horizontal as well as vertical delivery position

- Drainage
- Storm water
- Irrigation
- Air-conditioning
- Sewage handling
- Aqua Culture



**End Suction Process Pump**  
SERIES : KPD/KPDS

Delivery Size : up to 200 mm  
Capacity : up to 750 m<sup>3</sup>/hr  
Head : up to 150 metres  
Temperature : (-) 50°C to 350°C

- Back pull-out design
- Enclosed or Semi open impellers
- Conforming to DIN 24256 and ISO 2858
- Generally conforming to API 610
- Gland packed/Mechanical Seal
- Also available in vertical execution
- Working pressure 16-25 kg / cm<sup>2</sup>
- Available in various materials

- Process Liquid
- Distilleries
- Edible oil
- Sugar Syrup
- Water treatment plants

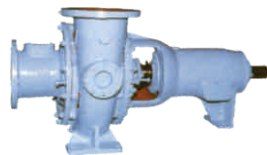


**Solids Handling Pump**  
SERIES : SHM/SHS

Delivery Size : up to 200 mm  
Capacity : up to 800 m<sup>3</sup>/hr  
Head : up to 90 metres  
Temperature : (-) 10°C to 140°C

- Back pull-out design
- Handle Solid up to 105 mm
- Gland packed/Mechanical Seal
- 50HZ / 60 HZ availability
- Also available in vertical execution

- Sludge & Sewage
- Powdered material slurries
- Sugar factory waste
- Contaminate Process Liquids
- Paper Pulp
- Viscous Liquids



**Solid Handling Non-Clog Pump**  
SERIES : SHL

Delivery Size : up to 900 mm  
Capacity : up to 13000 m<sup>3</sup>/hr  
Head : up to 82 metres  
Temperature : (-) 10°C to 90°C

- Back pullout design
- Integral foot with bearing frame for higher strength
- Rugged and sturdy
- Heavy duty roller bearing
- Inspection hole cover in casing provided

- For handling liquids with solids in suspension,
- Pulpy material in paper Industries
- Viscous liquids or powdered material slurries
- Contaminated process liquids like sugar factory waste



**Non-Clog Pump**  
SERIES : NK/NKV

Delivery Size : up to 450 mm  
Capacity : up to 3400 m<sup>3</sup>/hr  
Head : up to 55 metres  
Temperature : (-) 10°C to 140°C

- Back pullout design
- Integral foot with bearing frame for higher strength
- Rugged and sturdy
- Heavy duty roller bearing
- Inspection hole cover in casing provided
- Also available in vertical design

- Effluents
- Sewage
- Viscous and contaminated liquids containing solids in suspension
- Paper Pulp



**Submersible Sewage Pump**  
SERIES : NS

Delivery Size : up to 200 mm  
Capacity : up to 750 m<sup>3</sup> /hr  
Head : up to 48 metres  
Temperature : (-) 10°C to 90°C

- Permissible solid size up to 105 mm
- Gland packed/Mechanical Seal
- 50 HZ / 60 HZ availability
- Multiple impeller options depending on application
- Rugged and sturdy
- Portable or stationary installations

- Effluents
- Waste water
- Storm water
- Raw sewage



**Horizontal Multistage Pump**  
SERIES : RKB

**RANGE**  
Delivery Size : up to 250 mm  
Capacity : up to 850 m<sup>3</sup>/hr  
Heads : up to 850 metres  
Temperature : (-) 40°C to 140°C

- FEATURES**
- Gland packed/Mechanical Seal
  - Suction flange can be directed left or right
  - Enclosed impellers
  - Also available in Vertical execution

- APPLICATIONS**
- Fire-fighting
  - Booster Service
  - Mine Dewatering
  - Boiler feed
  - Sprinkler Irrigation



**Horizontal Axially Split Casing Pump**  
SERIES : UP/UPL/UPH/UP (T)

Delivery Size : up to 1100 mm  
Capacity : up to 20,000 m<sup>3</sup>/hr  
Head range : up to 160 metres  
Temperature : (-) 10°C to 90°C

- Gland packed/Mechanical Seal
- Easy maintenance
- Rugged and sturdy
- Bottom Suction branch
- Low NPSH

- Water supply
- Irrigation
- Air-conditioning
- Power plants
- Fire fighting



**Horizontal Axially Split Casing Pump**  
SERIES : DSM/DSM (T)

Delivery Size : up to 150 mm  
Capacity : up to 470 m<sup>3</sup>/hr  
Head : up to 180 metres  
Temperature : (-) 10°C to 90°C

- Gland packed/Mechanical Seal
- Easy maintenance
- Two stage
- Stable characteristics
- Low NPSW

- Water supply
- Irrigation schemas
- Air-conditioning
- Fire fighting



**Vertical Turbine Pump**  
SERIES : BHR / BHQ / BHM / BHM<sub>a</sub> / BHA

Delivery Size : up to 2200 mm  
Capacity : up to 40,000 m<sup>3</sup>/hr  
Head range : up to 240 metres  
Temperature : (-) 10°C to 90°C

- Dry pit / wet pit arrangement available
- Low submergence
- Gland packed / Mechanical Seal
- Radial / Axial / Mixed flow type

- Irrigation
- Water supply
- Dry docks
- Refineries
- Fire fighting



**Sluice Valve**

**RANGE**  
Size : 50 to 1300 mm  
Pressure : PN 1.0 and PN 1.6  
Conforming to : IS : 780 & IS 2906  
Rating PN 16 Conforming to BS 5163

- FEATURES**
- Rigid and sturdy design
  - Low pressure loss
  - Available in Non Rising as well as in Rising Spindle type
  - Long service life
  - Resilient Seated valves available

- APPLICATIONS**
- Water
  - Effluent



**Butterfly Valve**

Size : 50 to 2500 mm  
Pressure upto PN 16  
Conforming to BS : 5155  
Pressure up to Class 250  
Conforming to AWWA C 504  
Higher pressure on request

- Available in Centric design up to 600 mm. single. Double Eccentric design from sizes 65 mm to 2500 mm
- Less wear and tear
- Self cleaning and non jamming seat design
- Low operating torque
- Rigid and sturdy design

- Water
- Effluent
- Sewage
- Chemical and petrochemical



**Reflux (Swing Check type Non Return) Valve**

Size : 40 to 700 mm (Single Door)  
Pressure up to PN 1.6  
Conforming to IS : 5312 (Part-1)  
Pressure upto PN 16  
Conforming to BS EN 12334 (formerly BS : 5153)

- Rigid and sturdy design
- Swing check type with minimum head loss
- Long service life

- Water
- Effluent
- Sewage



**Gate Valve (Cast Steel)**

Class 150# sizes 2" to 24"  
Class 300# sizes 2" to 12"  
Class 600 # sizes 2" to 14"  
Temperature upto 475°C

- Conforming to API 600
- Rigid and Sturdy Design
- Low Pressure Loss
- Long service life

- Liquids having corrosive properties
- Oil
- Chemical

