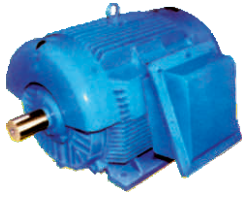


Motors & Gears

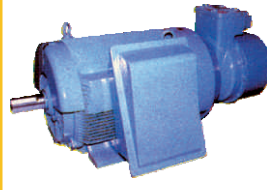


AC MOTORS - CAGE ROTOR



- › Range : 0.37 to 20000kW
- › Voltage : 0.38, 0.415/3.3/ 6.6kV
- › RPM : 3000/1500/1000/ 750 / 600
- › Insulation : Class "F"
- › Mounting : Horizontal/Vertical flange/
Foot cum flange
- › Enclosure : IP 22 / IP 55
- › Cooling : IC 01/411/511/611

AC MOTORS - WOUND ROTOR



- › Range : 7.5 to 20000kW
- › Voltage : 0.38/0.415/3.3/6.6kV
- › RPM : 1500/1000/ 750/600
- › Insulation : Class "F"
- › Mounting : Horizontal
- › Enclosure : IP22/IP55
- › Cooling : IC 01/411/511/611
- › Duty : SI

FLAME PROOF MOTORS



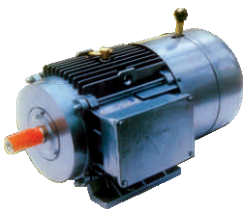
- › Range : 0.37 to 350 kW
- › Voltage : 380 & 415Volts
- › RPM : 3000/1500/1000/750
- › Insulation : Class "F"
- › Mounting : Horizontal/ Vertical flange
- › Enclosure : IP 55
- › Cooling : IC 411
- › Gas Groups : I, IIA & IIB

CRANE DUTY MOTORS



- › Range : 0.37 to 1000kW
- › Duty : S3, S4, S5
- › Starts/Hour : 6/150/300
- › CDF : 25%, 40%, 60%,100%
- › Type : Cage/ Slipring
- › Insulation : Class "F"
- › Enclosure : IP 55
- › Cooling : IC 411

BRAKE MOTORS



- › Range : 0.18 to 20kW
- › Voltages : 380 & 415Volts
- › RPM : 1500/1000/750
- › Insulation : Class "F"
- › Mounting : Horizontal/Vertical flange/
Foot cum flange
- › Enclosure : IP 55
- › Cooling : IC 411
- › AC/DC Brakes.

AC MILL DUTY MOTORS



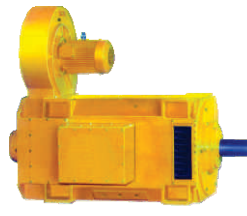
- › Range : 110 to 2000kW
- › Voltage : 0.415/3.3/6.6kV
- › RPM : 1000/750/600
- › Insulation : Class "F"
- › Mounting : Horizontal
- › Enclosure : IP 23
- › Cooling : IC 01
- › Applications : Steel Mills, Rolling Mills,
Sugar Mills, Paper Mills,
Cement, Fertilizer

SPECIAL MOTORS



- › Vertical Hollow Shaft Motors
- › Roller Table Motors
- › Increased Safety Motors
- › Non-Sparking Motors.
- › Textile and Loom Motors.
- › 60Hz Motors

DC MOTORS



- › Range : Up to 3000 kW
- › DC Voltage : 180 to 1000V
- › RPM : 1800/1000/600
- › Insulation : Class "F" / "H"
- › Mounting : Horizontal Foot / Vertical flange
- › Enclosure : IP 21/22/23/44
- › Cooling : IC 01/06/0041/ 0141/0666
- › Types : Laminated / Solid yoke
- › Duty : S1/ S4

WORM GEAR BOX



- › Worm Speed Reducers
- › Sizes : 1 $\frac{1}{2}$ - 14"
- › Reduction Ratios : 5:1 to 4900:1
- › Power : 0.25 to 140kW
- › Universal Mounting Modular Unit

GEARED MOTORS



- › Helical Gears
- › Range : 0.4 to 50kW
- › Speed : 0.25 to 280 RPM
- ›AGMA Class : I, II, III
- › Permanently Lubricated
- › Available with AC or DC motors, Flame proof
and Brake Motors

HELICAL SHAFT MOUNTED DRIVES



- › Helical Speed Reducers
- › 98% efficiency per stage
- › Seven sizes
- › Reduction ratios : 5:1, 13:1 & 20:1
- › Direct Mounting on shaft
- › Case Carburised & ground gears
- › Long life

CYCLOIDAL DRIVES



- › Cycloidal Speed Reducers
- › Reduction Ratios : 9:1 to 43645 : 1
- › Power : 0.18 to 75 kW
- › Mounting : Foot / Flange
- › Efficiency : >92% in Single Stage

