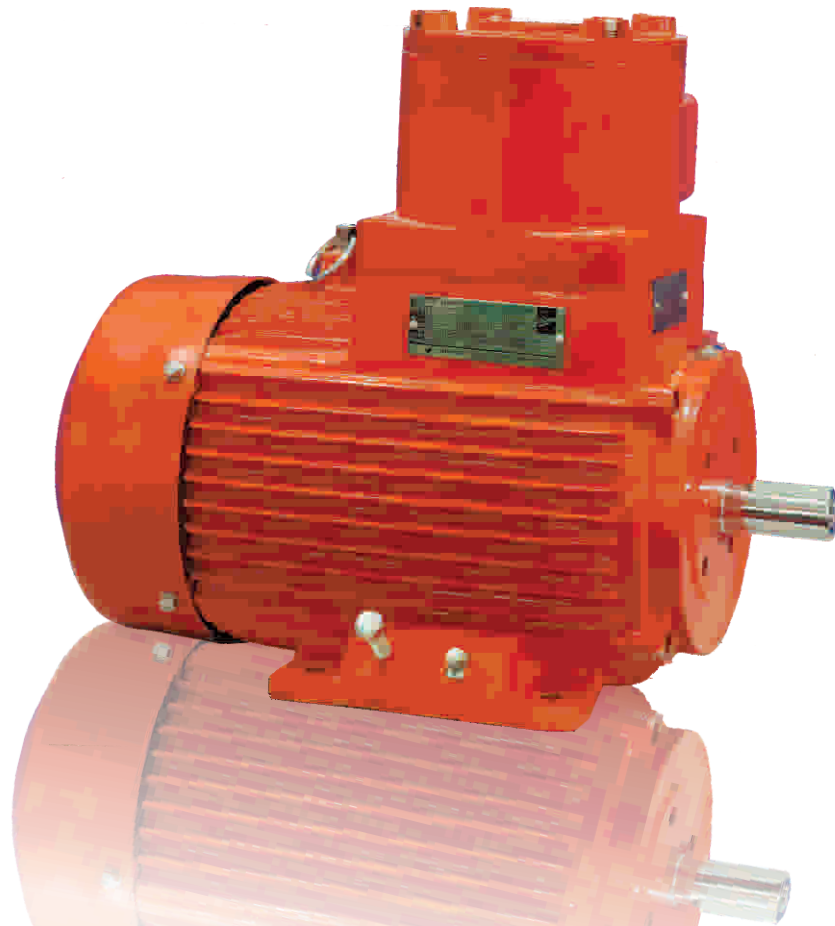


FLAME PROOF MOTORS



SPECIFICATIONS

- Voltage : 415V \pm 10% - 3 Ph AC
- Frequency : 50 Hz \pm 5%
- Combined Variation : \pm 10%
- Insulation : F
- Duty : S1
- Mounting : IM 1001
- Factor of Inertia : 2
- Enclosure : IC 411.
- Ambient : 50°C
- Gas Group : I, IIA, IIB
- Hazardous Area : Zone 1 / Division I

APPROVED BY

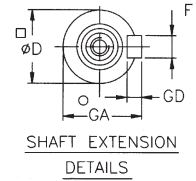
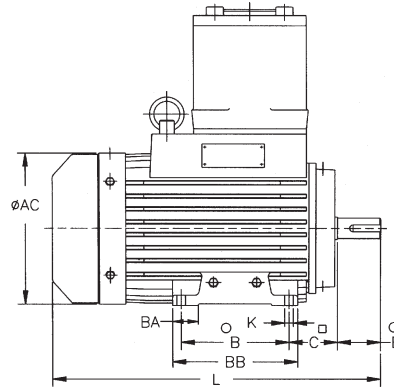
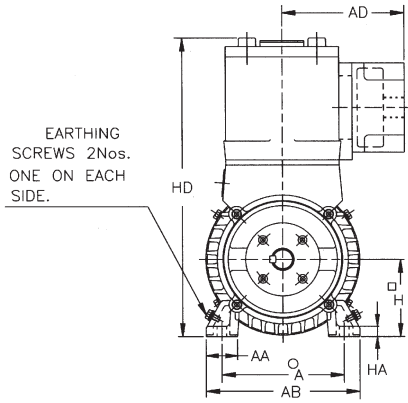
- Central Mining Research Institution, Dhanbad (CMRI)
- Director General of Mines Safety, Dhanbad (D.G.M.S.)
- Chief Controller of Explosives, Nagpur (C.C.E)
- Directorate General Factory Advice Service and Labour Institutes (DGFAS & LI) Mumbai,
- Bureau of Indian Standard (BIS)

COMPLIES TO

- IS: 2148 : Flame Proof Construction
- IS: 325 : Specification for 3 Phase Induction motors
- IS: 4691 : Protection by enclosure

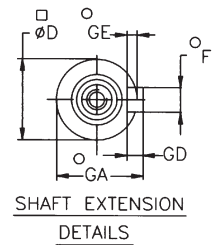
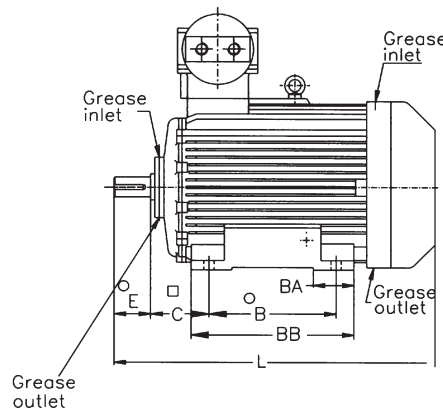
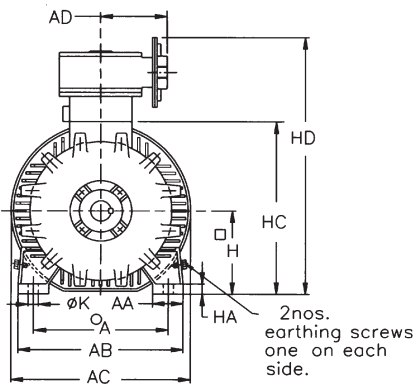


FOOT MOUNTING MOTORS - FRAME LE 63 - 160



Sl. No.	FRAME	A	AA	AB	AC	AD	B	BA	BB	C	D	E	F	GA	GD	H	HA	HD	K	L
1.	LE 63	100	25	128	127	90	80	29	108	40	11	23	4	12.5	4	63	8	249	7	265
2.	LE 71	112	32	140	140	90	90	27	120	45	14	30	5	16	5	71	8	266	7	285
3.	LE 80	125	30	155	157	90	100	38	136	50	19	40	6	21.5	6	80	12	281	10	315
4.	LE 90 S	140	36	176	177	145	100	38	120	56	24	50	8	27	27	90	13	348	10	355
5.	LE 90L	140	36	176	177	145	125	38	145	56	24	50	8	27	7	90	13	348	10	380
6.	LE 100L	160	40	200	194	145	140	40	170	63	28	60	8	31	7	100	15	366	12	420
7.	LE 112M	190	40	230	219	155	140	40	180	70	28	60	8	31	7	112	15	390	12	445
8.	LE 132 S	216	40	256	260	155	140	40	130	89	38	80	10	41	41	132	17	425	12	495
9.	LE 132 M	216	40	256	260	155	178	40	218	89	38	80	10	41	8	132	17	425	12	530
10.	LE 160 M	254	60	314	311	155	210	60	270	108	42	110	12	45	45	160	25	473	15	600
11.	LE 160 L	254	60	314	311	155	254	60	314	108	42	110	12	45	8	160	25	473	15	645

FOOT MOUNTED MOTORS - FRAME LE 180 - 315



Sl No.	FRAME	POLE	A	AA	AB	AC	AD	B	BA	BB	C	D	E	F	GA	GD	GE	H	HA	HC	HD	K	L
1.	LE180M	2, 4, 6&8	279	64	313	365	188	241	64	305	121	48	110	14	51.5	9	5.5	180	27	375	645	15	690
2.	LE180L	2	279	64	343	365	188	279	64	343	121	48	110	14	51.5	9	5.5	180	27	375	503	15	725
3.	LE180L	4, 5, 6&8	318	76	395	415	188	305	76	381	133	55	110	16	59	10	6.0	200	34	420	692	19	785
4.	LE225S	2P	356	80	445	515	315	286	70	331	149	55	110	16	59	10	5.5	225	34	490	770	19	820
5.	LE225S	4, 6 & 8P	356	80	445	515	315	286	70	331	149	60	140	15	64	11	6.0	225	34	490	770	19	850
6.	LE225M	2P	356	80	445	515	311	286	70	356	149	55	110	16	59	10	6.0	225	34	490	770	19	845
7.	LE225M	4, 6&8P	356	80	445	515	311	286	70	356	149	60	140	18	64	11	7.0	225	34	490	770	19	875
8.	LE250M	2	406	85	494	571	250	349	80	405	168	60	140	18	64	11	7	250	24	535	875	24	935
9.	LE250M	4,6&8P	406	85	494	571	250	349	80	405	168	65	140	18	69	11	7	250	24	535	875	24	935
10.	LE280S	2	457	90	546	625	250	368	88	429	190	65	140	18	69	11	7	280	33	590	925	24	1044
11.	LE280S	4, 6 & 8	457	90	546	625	250	368	88	429	190	75	140	20	79.5	12	7.5	280	33	590	925	24	1044
12.	LE280M	2	457	90	546	625	250	419	88	480	190	65	140	18	69	11	7	280	33	590	925	24	1095
13.	LE280M	4, 6 & 8	457	90	546	625	250	419	88	480	190	75	140	20	79.5	12	7.5	280	33	590	925	24	1095
14.	LE315S	2	508	105	620	690	250	406	160	518	216	65	140	18	69	11	7	315	33	660	1000	28	1170
15.	LE315S	4, 6 & 8	508	105	620	690	250	406	160	518	216	65	170	22	85	14	9	315	33	660	1000	28	1170
16.	LE315L	2	508	105	620	690	250	508	160	620	216	70	140	20	74.5	12	7.5	315	33	660	1000	28	1290
17.	LE315L	4, 6 & 8	508	105	620	690	250	508	150	620	216	90	170	25	95	14	9	315	33	660	1000	28	1320

All Dimensions are in mm

