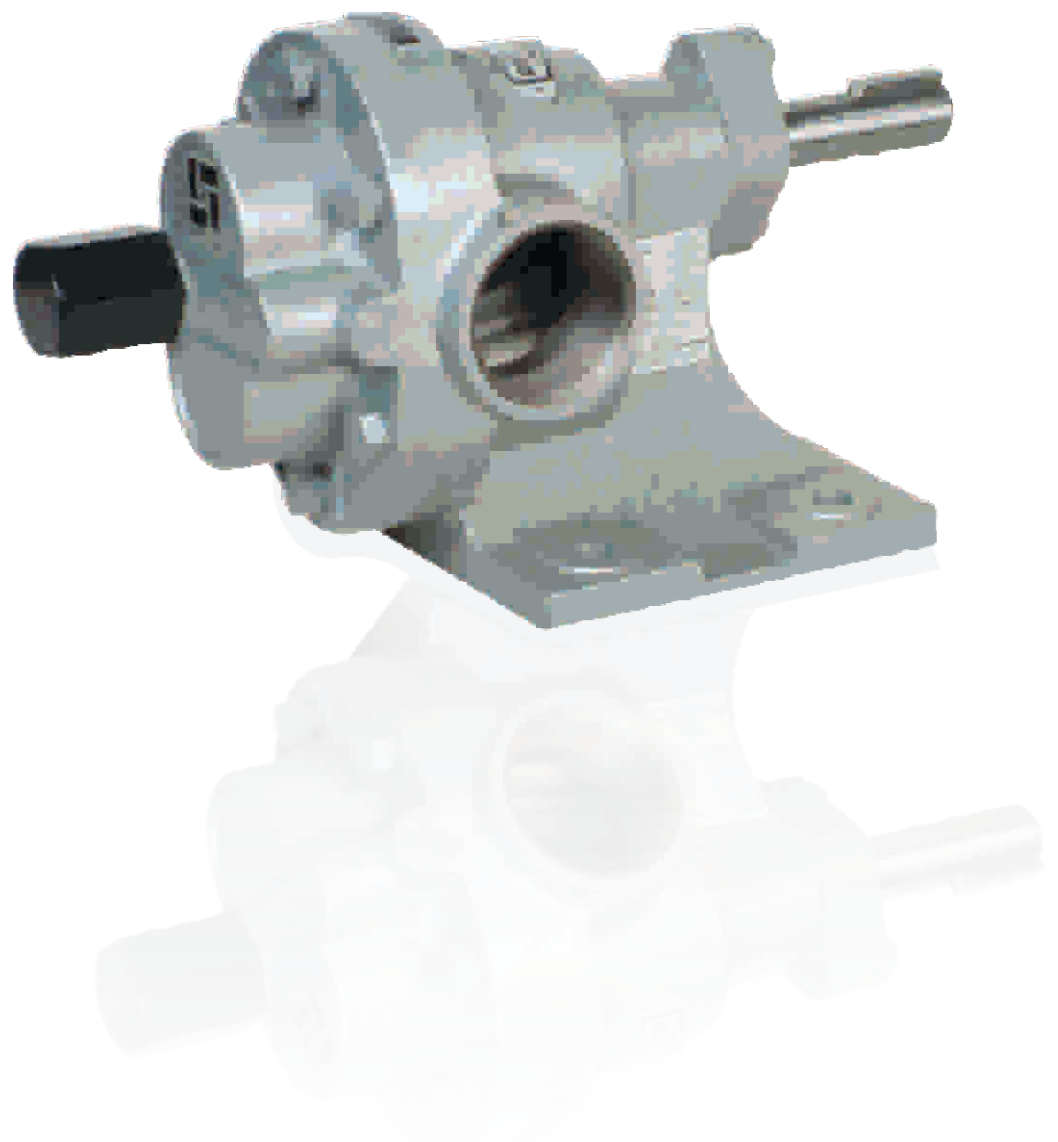


ROTARY GEAR PUMPS

SERIES - HG

For Transfer of Oil & Viscous Liquids

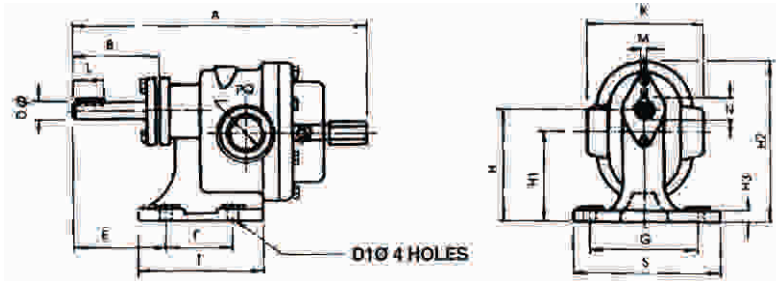


- **General Description** : HG series pumps are general purpose foot mounted pumps with threaded inlet & outlet ports.
- **Sizes** : ¼" to 3" BSP (9 different sizes)
- **Capacity** : 5 to 500 LPM.
- **Pressure** : Upto 10 kg/cm².
- **Features** : Sturdy design and construction to ensure long trouble free life with best performance.
- **Applications** : All General Purpose Viscous fluids like Lub oil, Paints, Edible oil etc.

PERFORMANCE TABLE

PUMP MODEL	SUCTION & DELIVERY	CAPACITY AT 1440 RPM			RECOMMENDED MOTOR BHP AT DIFFERENTIAL PRESSURE (kg/cm ²) WITH 1500 SSU VISCOSITY											WT. OF (APPROX.) BARE PUMP IN KG.
		LPM	US GPM	M ³ /hr	Kg/cm ²	1	2	3	4	5	6	7	8	9	10	
HG-050	½" x ½"	20	5.3	1.2	KW	0.30	0.35	0.40	0.45	0.50	0.55	0.60	0.65	0.70	0.75	2.2
					HP	0.5			0.75			1.0				
HG-075	¾" x ¾"	30	7.92	1.8	KW	0.37	0.45	0.54	0.62	0.69	0.77	0.85	0.92	1.01	1.09	4.2
					HP	0.75			1.00			1.5				
HG-100	1" x 1"	50	13.2	3.0	KW	0.40	0.50	0.60	0.75	0.89	1.04	1.17	1.30	1.46	1.59	5.0
					HP	1.0			1.5			2.0				
HG-125	1¼" x 1¼"	75	19.8	4.5	KW	0.7	1.0	1.2	1.4	1.5	1.9	1.95	2.15	2.35	2.55	8.0
					HP	1.5			2.0			3.0				
HG-150	1½" x 1½"	110	29.0	6.6	KW	1.05	1.45	1.95	2.10	2.40	2.65	2.95	3.25	3.60	3.75	9.5
					HP	2.0			3.0			5.0				
HG-200	2" x 2"	225	59.4	13.5	KW	2.0	2.5	3.2	3.7	4.3	4.55	5.6	6.2	6.9	7.11	17.2
					HP	3.0			5.0			7.5				
HG-250	2½" x 2½"	350	92.5	21.0	KW	4.15	5.2	6.1	7.3	8.2	9.1	10.3	11.2	12.1	12.25	28.5
					HP	5.0			10.0			12.5				
HG-300	3" x 3"	500	131.6	30.0	KW	4.5	6.6	8.4	9.9	11.1	12.1	13.0	13.9	14.9	15.9	40.0
					HP	10			15			20				

DIMENSIONS



MATERIAL OF CONSTRUCTION

PART	STANDARD
Body	IS.210 FG 220 C.I. Grade
Back Cover	IS.210 FG 200 C.I. Grade
Gears	EN-8
Shaft	SAE-8620 H.G.
Bearing (Bushes)	Non Ferrous
Seal	Neoprene Oil Seal

Pressure relief valve will be provided in all models.

MODEL	A	B	E	F	G	S	T	H	H1	H2	H3	L	M	N	DØ	D1Ø	K	PQ
HG-050	172	46	51	40	70	90	70	63	50	90	6	22	4	13.5	12	8	70	½" B.S.P
HG-075	215	54	63.5	45	85	110	80	80	66	115	8	25	5	16.0	14	10	90	¾" B.S.P.
HG-100	236	64	64.5	50	93	125	95	90	73	128	8	27.5	5	19.5	17	10	86	1" B.S.P.
HG-125	266	70	65	60	105	140	110	100	79	140	10	32	6	22.5	20	12	100	1¼" B.S.P
HG-150	290	75	80	70	115	150	130	110	88	155	12	35	6	24.5	22	12	108	1½" B.S.P.
HG-200	360	98	92	100	140	180	160	132	105	192	15	40	8	28	25	15	142	2" B.S.P.
HG-250	420	110	110	120	155	200	185	145	114	215	18	45	8	31	28	17	160	2½" B.S.P.
HG-300	455	125	120	140	180	235	205	160	124	235	20	50	8	33	30	17	170	3" B.S.P.

*All dimensions are in millimeters.

Unless otherwise stated Specifications are subject to change without prior notice as improvements are made from time to time.

CONVERSION: 1 Imperial gallon = 4.5 Liters 1 U.S. Gallon = 3.78 Liters 1 P.S.I. = 2.31 Feet
 1 Kg/Cm2 = 14.2 p.s.i. 1 Meter = 3.28 Feet

