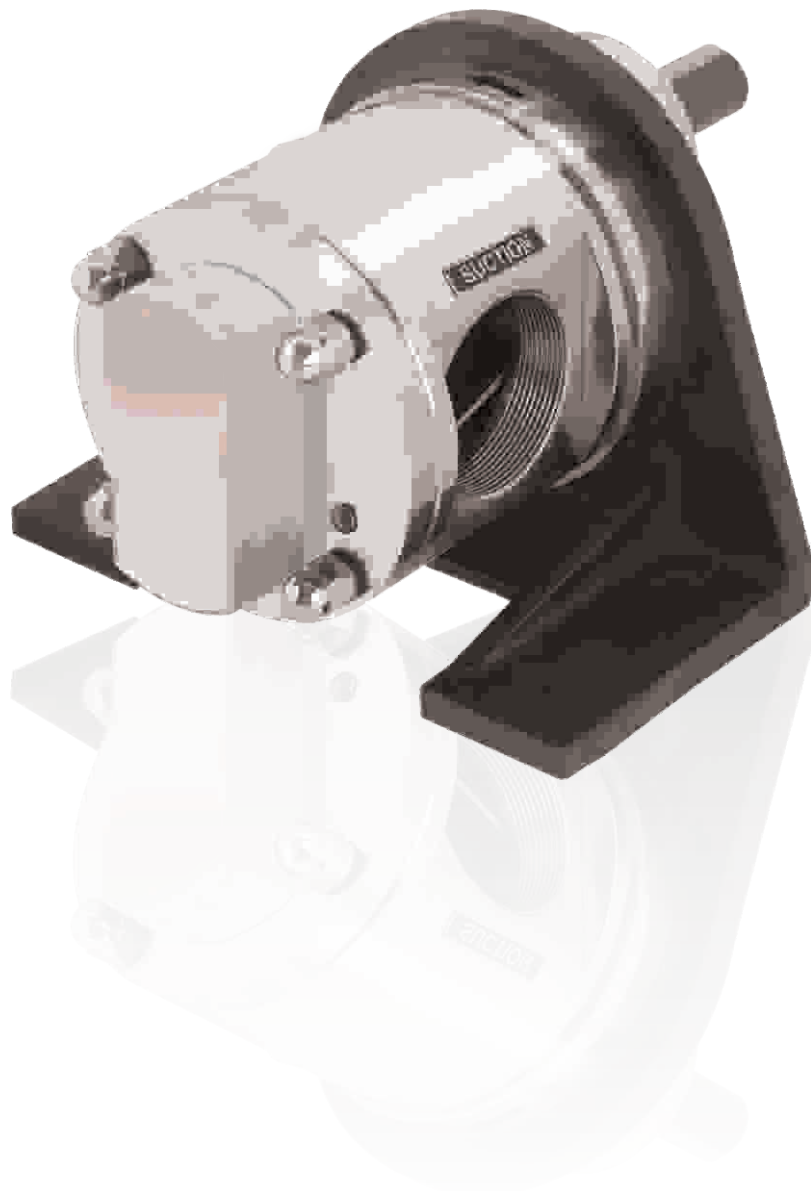


# S. S. ROTARY GEAR PUMPS SERIES - HGSX

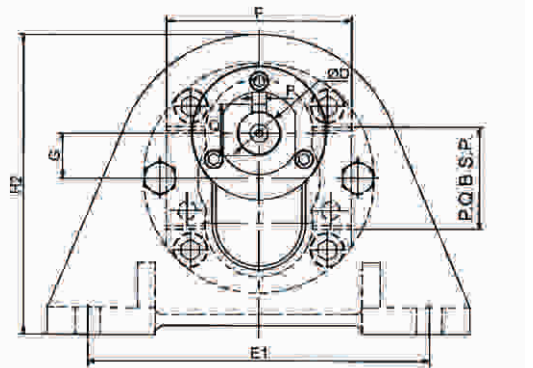
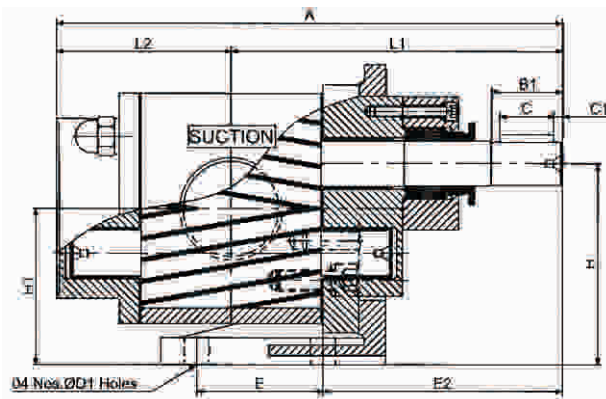
For Transfer Corrosive, Hygienic  
& Viscous Liquid



- **General Description** : HGSX series pumps are Special purpose foot mounted pumps with threaded inlet & outlet ports.
- **Sizes** : 1/4" to 2 1/2" (6 different sizes)
- **Capacity** : 8 to 300 LPM. Liquid
- **Pressure** : Upto 11 kg/cm<sup>2</sup>.
- **Features** : Versatile \*Compact \*Easily cleanable
- **Applications** : All food Grade products like Ghee, Butter, etc., Glycol, Glycerine etc. Corrosive Viscous Chemicals.

#### MATERIAL OF CONSTRUCTION

Pump Body	: CF8M - S.S. 316	R.H. & L.H. Gear	: AISI - S.S. 316	Dom Nut	: AISI - S.s. 316
From Cover	: CF8M - S.S. 316	Rotor/Stator Shaft	: AISI - S.S. 316	Sealing	: "Z" Pack teflon
Back Cover	: CF8M - S.S. 316	Bush Bearing	: Teflon coated 'DU'	Packing	: Teflon Sheet
Gland Cover	: CF8M - S.S. 316	Mounting Bracket	: C.I.Gr. - 20 IS 210	Key for Coupling	: AISI S.S. 316



#### MODEL - SIZE - CAPACITY & POWER CHART

PUMP MODEL HGSX	SUCTION & DELIVERY	CAPACITY at 1440 RPM			POWER REQ.			PUMP DIMENSION													WT. OF PUMP IN KG.	
		LPM	US GPM	M <sup>3</sup> /hr	NO LOAD VISCIOUS H.P. at		Unit H.P. Per Kg. press	OVER ALL					MOUNTING & SHAFT									
					200 CST	500 CST		A	F G	H2	L1	L2	E	E1	E2	H	H1	D D1	C C1	P Q		B1
025	1/4" x 1/4"	8.33	2.2	0.50	0.20	0.25	0.02	129	54	12.5	101	94	35	40	120	63	50.5	11.5	17	4	25	2.00
040	3/8" x 3/8"	16.66	4.4	1.00	0.35	0.40	0.04	134	61	112	98.5	35.5	50	120	76.5	71	57	11.5	17	4	25	3.00
050	1/2" x 1/2"	25	6.6	1.50	0.40	0.50	0.06	144	14	112	103	41	50	120	86	71	57	8	3	13	25	3.50
075	3/4" x 3/4"	33.33	8.8	2.00	0.45	0.55	0.08	169	72.5	123	123	46	55	140	98.5	80	63	14	25	5	35	4.50
100	1" x 1"	50	13.2	3.00	0.50	0.60	0.13	167	17	128	115	52	45	140	86	90	73	10.5	3	16	35	5.00
125	1 1/4" x 1 1/4"	100	26.4	6.00	0.65	0.85	0.28	209	90	139	143	66	50	138	111	90	69	18	30	6	38	7.00
150	1 1/2" x 1 1/2"	125	33.0	7.50	0.75	0.95	0.35	224	21	149	151	73	50	153	111	100	79	12	3	20.5	38	10.00
200	2" x 2"	150	39.6	9.00	0.90	1.15	0.45	246	103	167	161.5	85	70	190	123	112	87	24	30	8	40	20.00
		200	52.8	12.00	1.00	1.25	0.60	276	25	167	179	97	70	190	128	112	87	14	5	27	40	24.00
250	2 1/2" x 2 1/2"	250	65.0	15.00	1.20	1.40	0.65	299	122	197	206	93	85	200	160	132	102	28	40	8	50	35.00
		300	80.0	18.00	1.40	1.65	0.77	319	30	197	218	101	85	200	162	132	102	16	5	32	50	40.00

#### SPECIAL NOTES

- For calculating power requirement at duty point, multiply duty point pressure with unit horse power & add no load viscous power of appropriate viscosity. Provide safety margin before fixing the rating of the prime mover for higher viscosity. Further margin may be kept or the manufacturer may be consulted.
- All sizes of HGSX pumps are designed to run at 1440 RPM up to viscosity of 500 CST, Small size pumps up to 1" can be the safely run at 1400 RPM even at higher viscosity up 1000 CST with additional horse power. For sizes above 1" reduce the speed to 960 RPM for viscosity up to 1000 CST for higher viscosities consult us to avoid cavitation & over loading problem.

#### APPLICATIONS

- Handling viscous food products like Ghee, Butter, Fruit Pulp, Vegetable Souse, Kanji etc.
- In pharmaceutical industries for handling Sugar solution, Glycerine, Glycol etc.
- In Chemical industries corrosive viscous chemicals.

