

VERTICAL MULTISTAGE INLINE PUMPS  
TYPE : IL



## VERTICAL MULTISTAGE INLINE PUMPS



**Range :**

Delivery size upto : 100mm

Capacity upto : 75m<sup>3</sup>/hr

Head upto : 220 m

- Energy Efficient
- Easy installation and pipe connection
- Small floor space
- No expensive foundation

# VERTICAL MULTISTAGE INLINE PUMPS

## Constructional Features

Kirloskar IL pumps are vertical multistage, high pressure centrifugal pumps in ring section design with inline suction and delivery.

### Special Features

- Durable and light parts of high quality materials like stainless steel, tungsten carbide and ceramic
- Energy efficient through superior hydraulic design and ultra smooth hydraulic passage, and power saving of 10% to 30% when compared with conventional pumps
- All sealing by means of O-rings

## Suction and Delivery Casing

Inline suction and discharge casing ensure easy installation and simple piping layout and negligible effect of outside nozzle forces / moments.

### Impellers

Pressed stainless steel enclosed, radial flow impellers have ultrasmooth hydraulic passages resulting in higher efficiency. Impellers have superior suction eye design ensuring lower NPSH.

### Diffusers

Diffusers are made in pressed stainless steel and designed to reduce the internal losses.

### Outer Casing Cover

Outer casing cover has specially shaped O ring grooves for optimal sealing. Pressurised water between diffuser and outer casing dampens the noise almost completely ensuring quiet operation.

### Shaft

High tensile stainless steel vertical shaft is supported by bush bearings. The shaft is sealed with mechanical seal of DIN 24960 standard

### Bearings

Radial type bush bearings of tungsten carbide on shaft and ceramic bearing in diffuser are maintenance free, self lubricated and highly wear resistant. Axial thrust is taken by motor bearings.

### Direction of Rotation

Clockwise viewed from driving end.

### Flanges

Flanges are in DIN standard. Material of Construction 01 and 02.

Oval - 25 IL, 32IL, 40 IL Pumps upto 15 stages are supplied with oval flanges as a standard.

Round - 25IL, 32IL and 40 IL above 15 stages 50 IL, 65IL, 80 IL and 100 IL pumps in all stages.

Material of Construction 03 - Round flanges are supplied for all pumps.

## Applications

Liquid temperature from	-	15°C to 120°C.
Building industry	-	Booster, Fire fighting, hydropneumatic system, Heating, Ventilation and Air conditioning
Small capacity power plant	-	Boiler feed and condensate transfer
Water treatment plants	-	RO, DM Plant, Waste water
Chemical, Pharma, Textile	-	Cooling, Transfer, Hot water services
Engineering and Automobile	-	Industrial Washing machines, Coolant circulation
Dairy, Food processing, Beverages	-	Clean water services

### Pressurised cleaning systems

Irrigation	-	Sprinkler irrigation, Golf course, Parks, Gardens, Sports grounds
Water Supply	-	Pressure boosting systems. Hotels, Resorts.



## MATERIALS OF CONSTRUCTION

Parts	Code 01 - SS304	Code - 02 - SS316	Code 03 - SS304 with suction and discharge casing of Cast Iron
Impellers, diffusers, bottom casing, outer casing cover and top casing cover	AISI 304	AISI 316	AISI 304
Pump shaft	AISI 303	AISI 316	AISI 304
Suction and delivery casing	AISI 304	AISI 316	Cast Iron
Base plate		Cast Iron	**
Motor stool		Cast Iron	
Elastomers ('O' rings)	Rubber EPDM	Rubber Viton	Rubber EPDM
Drain Plug	Brass	AISI 316	Brass

\*\* Base plate is intergral with suction and delivery casing for 03 code

### Drive

The pumps are coupled with three phase TEFC motor as per IEC standard. Degree of protection IP 55 and Class of insulation F.

### Pump Designation

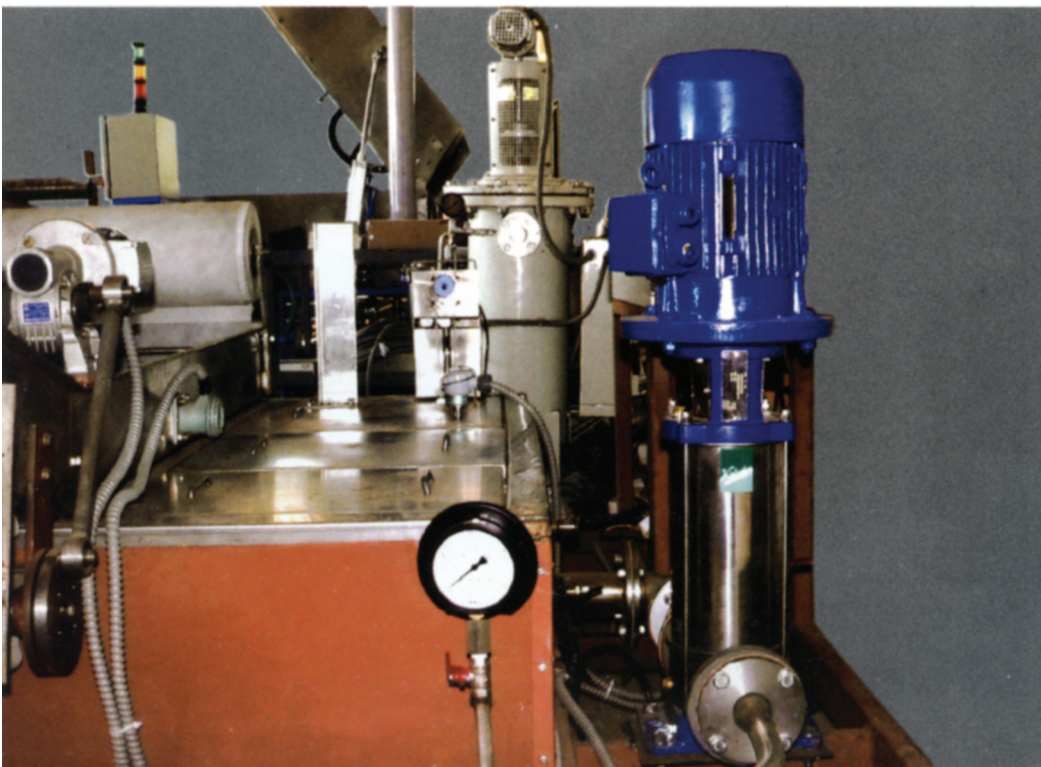
25 IL 11

Suction and delivery size (mm) \_\_\_\_\_ 25

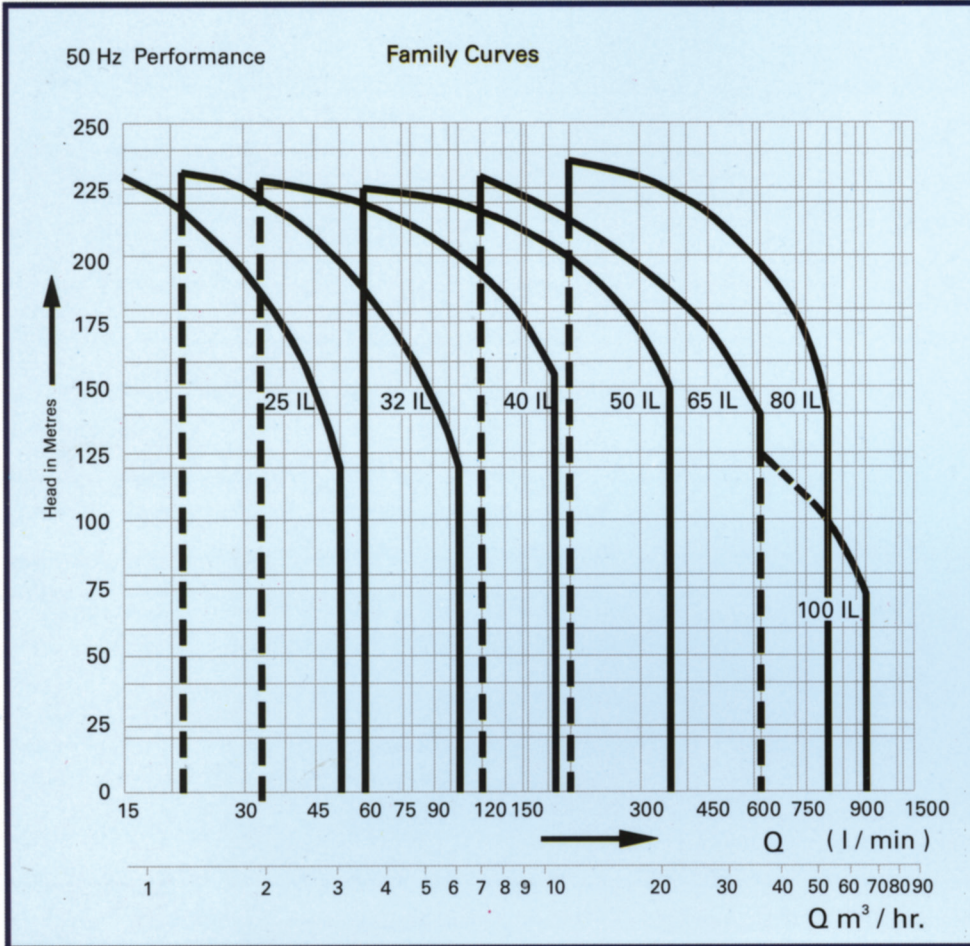
Pump series \_\_\_\_\_ IL

No. of stages \_\_\_\_\_ 11

Code for Material of Construction \_\_\_\_\_ 01, 02 and 03



### Family Curves



### Drive Ratings

Model	No. of Stages	Motor Rating (KW)
25 IL	01 to 03	0.37
	04 & 05	0.55
	06 & 07	0.75
	08 to 11	1.1
	13 & 15	1.5
	16 to 20	2.2
32 IL	23 & 25	03
	01 & 03	0.37
	03	0.55
	04 & 05	0.75
	06 & 07	1.1
	8 to 10	1.5
40 IL	11 to 15	2.2
	16 & 20	03
	23 & 25	04
	01 & 02	0.75
	03	1.1
	04	1.5
50 IL	05 & 06	2.2
	07 & 08	03
	09 & 10	04
	12 to 16	5.5
	18 & 20	7.5
	01	1.1
65 IL	02	2.2
	03	03
	04	04
	05 & 06	5.5
	07 & 08	7.5
	10 & 12	11
80 IL	14 & 16	15
	01	2.2
	02	5.5
	03	7.5
	04	9.3
	05	11
100 IL	06 & 07	15
	08 & 09	18.5
	10 & 11	22
	12	26
	01,01	2.2
	01	04
80 IL	02,01	5.5
	02	7.5
	03,01 & 03	11
	4,1	11
	04	15
	5,1	15
100 IL	05	18.5
	6,1	18.5
	06	22
	07,01	22
	07 to 09,01	30
	09 to 10	37
100 IL	01	03
	02	5.5
	03	9.3
	04	11
	05	15
	06	18.5
100 IL	07 & 08	22
	09	26

